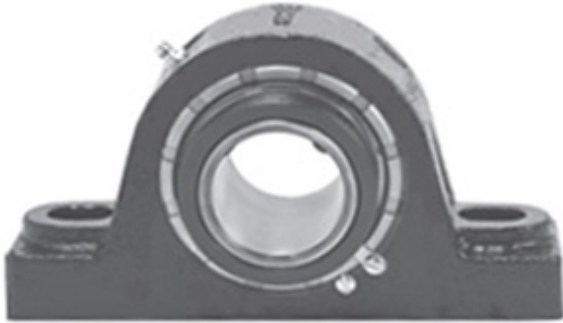




NTN Bearing Brazil Bearings Ltda.

2.938 Inch | 74.625 Millimeter x 3.86 Inch |
98.044 Millimeter x 3.25 Inch | 82.55 Millimeter
LINK BELT PB22647H Pillow Block Bearings



PB22647H Bearing 2D drawings and 3D CAD models

Bearing No. PB22647H

Category	Pillow Block Bearings
Inventory	1.0
Manufacturer Name	REXNORD
Minimum Buy Quantity	N/A
Weight	11.35
EAN	0662327985141
Product Group	M06288
Number of Mounting Holes	2
Mounting Method	Tapered Adapter Sleeve
Housing Style	2 Bolt Pillow Block
Rolling Element	Spherical Roller Bearing
Housing Material	Cast Iron
Expansion / Non-expansion	Non-expansion
Mounting Bolts	3/4 Inch
Relubricatable	Yes
Insert Part Number	B22647HL
Seals	Floating Labyrinth
Housing Configuration	1 Piece Solid
Inch - Metric	Inch
Other Features	Double Row Extended Inner Race
Long Description	2 Bolt Pillow Block; 2-15/16" Bore; 3-1/4" Base to Center Height; Tapered Adapter Sleeve Mount; Spherical Roller Bearing;



NTN Bearing Brazil Bearings Ltda.

	Relubricatable; Cast Iron; Floating Labyrinth; Non- expansion
Category	Pillow Block
UNSPSC	31171511
Harmonized Tariff Code	8483.20.40.80
Noun	Bearing
Keyword String	Pillow Block
Manufacturer URL	http://www.rexnord.com
Manufacturer Item Number	PB22647H
Manufacturer Internal Number	5898514
Weight / LBS	27
d	2.938 Inch 74.625 Millimeter
B	3.25 Inch 82.55 Millimeter
Bolt Spacing Minimum	0 Inch 0Millimeter
Bolt Spacing Maximum	0 Inch 0Millimeter
D	3.86 Inch 98.044 Millimeter
Actual Bolt Center to Center	8.1 Inch 206Millimeter
Nominal Bolt Center to Center	8.1 Inch 206.4 Millimeter